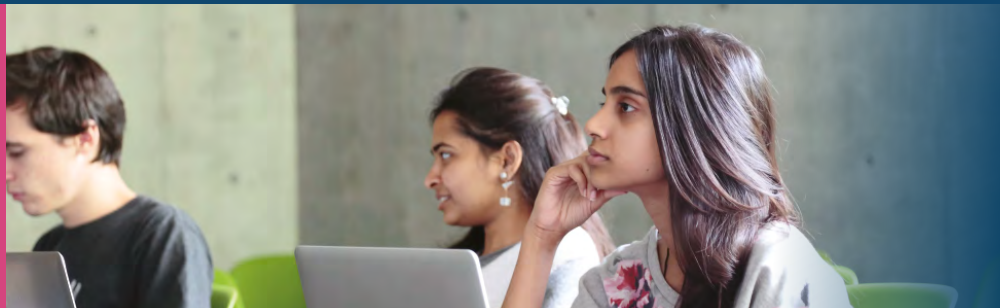


International College of Liberal Arts

EXCHANGE PROGRAM



山梨県

YAMANASHI
PREFECTURE

CONTENTS

ACADEMICS	1
STUDENT LIFE	4
LIFE IN KOFU, YAMANASHI	6
THINGS TO SEE AND DO	8
iEXPERIENCE PROGRAM	10

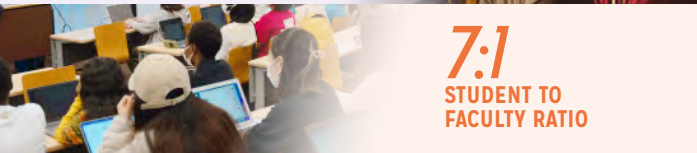
iCLA AT A GLANCE



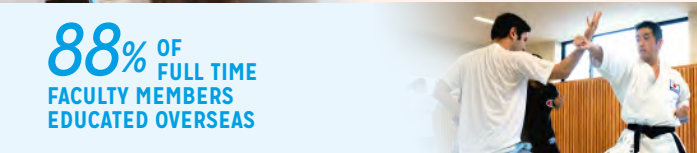
74%
INTERNATIONAL
STUDENTS



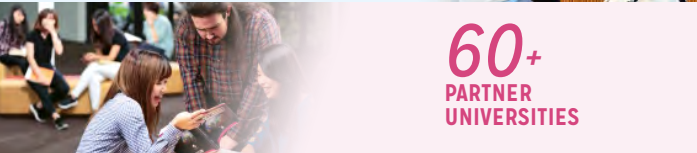
50+ DIFFERENT
STUDENT
NATIONALITIES



7:1
STUDENT TO
FACULTY RATIO



88% OF
FULL TIME
FACULTY MEMBERS
EDUCATED OVERSEAS



60+
PARTNER
UNIVERSITIES



90MIN
FROM CENTRAL TOKYO

iCLA

The international College of Liberal Arts (iCLA) at Yamanashi Gakuin University is a four year, English-medium, liberal arts college where the primary language of instruction is English. Just 90 minutes west of Tokyo, iCLA combines a multi-cultural learning environment with a beautifully traditional Japanese setting in the shadow of Mt. Fuji.

iCLA offers students the unique opportunity to immerse themselves in the very essence of Japanese culture whilst acquiring a contemporary and globally relevant education at our state of the art facilities. iCLA is one of the newest undergraduate faculties of Yamanashi Gakuin University, and is one of the most diverse programs in Japan, with over 60% international faculty and more than 50 different student nationalities.

YAMANASHI GAKUIN UNIVERSITY

Yamanashi Gakuin University (YGU) is a private institution founded in 1946. The university student body totals over 4,000 students across the undergraduate and graduate faculties. YGU is nationally renowned for achievements in sports and has produced numerous Olympic athletes and coaches. iCLA counts among its faculty decorated athletes like the former judo national champion!

UNDERGRADUATE

Main Language of Instruction: English

- International College of Liberal Arts (iCLA)

Main Language of Instruction: Japanese

- Faculty of Law
- Faculty of Business Administration
- Faculty of Health and Nutrition
- Institute of Sports Science

GRADUATE

Main Language of Instruction: Japanese

- Graduate School of Social Science

ACADEMICS

LIBERAL ARTS CURRICULUM

Education at iCLA spans both depth and breadth, as students study a variety of disciplines while acquiring a deep understanding of their chosen area. You can learn a variety of academic disciplines in English, ranging from Global Business & Economics, Political Science, Psychology, Interdisciplinary Data Science, Interdisciplinary Arts, Japan Studies, Quantitative Reasoning, Natural Sciences, Health & Physical Education and Sociology.

- Global Business & Economics
- Political Science
- Psychology
- Interdisciplinary Data Science
- Interdisciplinary Arts
- Japan Studies
- Quantitative Reasoning
- Natural Sciences
- Health & Physical Education
- Sociology

This framework provides students with the flexibility to explore and appreciate disciplines beyond their specialized area, all of which are undergirded key liberal arts principles of critical thinking and close faculty interaction.

WORKSHOPS

Our for-credit workshops offer unique opportunities to gain hands-on experience in a wide range of cultural, practical, and creative areas of study. Among the diverse workshops available, students can explore traditional Japanese music, arts, and culture such as Koto (Japanese harp), Fuji Culture, Judo, Karate, as well as Visual and Performing Arts including Drawing, Painting, Sculpting, Acting, and Directing.

JAPANESE LANGUAGE

While knowledge of the Japanese language is not necessary to study at iCLA, Japanese Language courses are offered from beginner to advanced level, and we warmly welcome students who wish to learn the language and gain greater insight into Japan and her people. Advanced learners may also choose to put their language skills to practice and take a course analyzing similarities and differences when communicating in their native language and the Japanese language, or take a preparatory course for the highest levels of the Japanese Language Proficiency Test (JLPT) levels N2 and N1.



ACADEMICS



GLOBAL BUSINESS & ECONOMICS

- > Accounting
- > Consumer Psychology
- > Contemporary Issues of Political Economy
- > Derivatives
- > Econometrics
- > Economic Psychology
- > Economics of Sustainable Development
- > Entrepreneurship
- > Financial Management
- > Geographical Political Economy

POLITICAL SCIENCE

- > Comparative Politics
- > Contemporary Issues of Political Economy
- > Geographical Political Economy
- > International Political Economy
- > International Relations

PSYCHOLOGY

- > Cognitive Psychology
- > Consumer Psychology
- > Cyberpsychology
- > Developmental Psychology

INTERDISCIPLINARY DATA SCIENCE

- > Coding Bootcamp: Python
- > Consumer Psychology
- > Cyberpsychology
- > Data Visualization Techniques in Python
- > Econometrics
- > Economic Psychology
- > Introduction to Computer Science

INTERDISCIPLINARY ART

- > Art Appreciation
- > Art Portfolio
- > Audio Engineering
- > Calligraphy and Kanji Culture
- > Comparative Literature Studies
- > Contemporary Science Fiction
- > Creative Nonfiction
- > Early Modern Japanese Literature
- > East Asian Tales of the Supernatural
- > English for Specific Purposes
- > Film and Animation Studio
- > Folklore and Archeology of Yamanashi
- > Fundamentals of Sound and Music
- > History of Art

JAPAN STUDIES

- > Bodies and Cultures in Modern Japanese History
- > Calligraphy and Kanji Culture
- > Comparative Literature Studies
- > Cultural Exchange in Japanese
- > Early Modern Japanese Literature
- > East Asian tales of the Supernatural
- > Film and Animation Studio
- > Folklore and Archeology of Yamanashi

HISTORY

- > Bodies and Cultures in Modern Japanese History

JAPANESE LANGUAGE

- > Japanese Language 1
- > Japanese Language 2
- > Japanese Language 3
- > Japanese Language 4
- > Japanese Language 5

QUANTITATIVE REASONING & NATURAL SCIENCES

- > College Algebra
- > Earth Science

HEALTH & PHYSICAL EDUCATION

- > Health & Physical Education 1 (Aikido)
- > Health & Physical Education 1 (Judo)
- > Health & Physical Education 1 (Karate)

SOCIOLOGY

- > Folklore and Archeology of Yamanashi
- > Japan: Case Studies in Society & Culture
- > Methods of Social Research

Notes:

- All courses listed here are subject to change.
- Courses are offered only in either Spring or Fall semester, or both semesters. Further details can be found on the website.
- Some courses are cross-listed in conjunction between the subject areas (up to three areas).

- > Intermediate Macroeconomics
- > Intermediate Microeconomics
- > International Finance
- > International Political Economy
- > International Trade & Economics of Globalization
- > Introduction to Fintech: Reshaping the Financial World
- > Investment
- > Japanese Economy & Business

- > Macroeconomics
- > Marketing
- > Methods of Social Research
- > Microeconomics
- > Money, Banking, and Financial Markets
- > Political Economy of Development
- > Political Economy of Trade and Industrial Policy
- > Portfolio Management
- > Risk Management
- > Statistics

- > International Relations in the Asian Pacific Region
- > International Security
- > Introduction to Political Science
- > Introduction to Public Administration
- > Japanese Politics and Diplomacy

- > Methods of Social Research
- > Nonprofit/Social Enterprise Management
- > Political Economy of Development
- > Political Economy of Trade and Industrial Policy
- > Public Policy and Service
- > Statistics

- > Economic Psychology
- > Health Psychology
- > Individual Differences
- > Introduction to Psychobiology

- > Introduction to Psychology
- > Psychopathology
- > Research Design
- > Social Psychology

- > Introduction to Fintech: Reshaping the Financial World
- > Introduction to Python Programming
- > Investment
- > Machine Learning
- > Mathematics for Data Science
- > Political Economy of Development

- > Political Economy of Trade and Industrial Policy
- > Portfolio Management
- > Research Design
- > Risk Management
- > Science, Society & Self
- > The Art & Science of Decision Making in an Era of Accelerating Change: Transformation/Big Data/AI

- > Interdisciplinary Arts
- > Introduction to Filmmaking
- > Introduction to Language Concepts
- > Japanese Traditional Music
- > Japanese Traditional Theater
- > Japan: Lost in Adaptation and Representation
- > Literature Appreciation
- > Music Technology
- > Music of the 20th Century
- > Performance Strategies
- > Rhetorical Analysis and Composition
- > Samurai Code and Culture
- > Second Language Acquisition
- > Semantics
- > Sociolinguistics

- > World Englishes
- > Workshop: Acting I
- > Workshop: Acting II
- > Workshop: Archeolinguistics
- > Workshop: Directing
- > Workshop: Drawing I
- > Workshop: Drawing II
- > Workshop: Guitar
- > Workshop: Japanese Koto
- > Workshop: Painting and Sculpting I
- > Workshop: Painting and Sculpting II

- > Health & Physical Education 1 (Aikido)
- > Health & Physical Education 1 (Judo)
- > Health & Physical Education 1 (Karate)
- > Health & Physical Education 1 (Nanba)
- > Health & Physical Education 1 (Shugendo)
- > Health & Physical Education 2 (Judo)
- > Health & Physical Education 2 (Karate)
- > History of Science and Medicine in Japan
- > Introduction to Japanese History

- > Japanese Economy & Business
- > Japanese Politics and Diplomacy
- > Japanese Traditional Music
- > Japanese Traditional Theater
- > Japan: Case Studies in Society & Culture
- > Japan: Lost in Adaptation and Representation
- > Samurai Code and Culture
- > The Anthropology of Japan
- > Workshop: Fuji Culture
- > Workshop: Japanese Koto

- > History of Science and Medicine in Japan

- > Introduction to Japanese History

- > Japanese Language 6
- > Japanese Language 7
- > Konnichiwa Japanese
- > Preparation for the N1 level of the Japanese Language Proficiency Test

- > Preparation for the N2 level of the Japanese Language Proficiency Test
- > Professional Writing in Japanese
- > Test Professional Writing in Japanese
- > Socio-Cultural Communication in Japanese
- > Workshop: Experiencing Teaching Japanese

- > Math for Liberal Arts
- > Statistics
- > Science, Society & Self

- > The Art & Science of Decision Making in an Era of Accelerating Change: Transformation/Big Data/AI

- > Health & Physical Education 1 (Nanba)
- > Health & Physical Education 1 (Shugendo)

- > Health & Physical Education 2 (Judo)
- > Health & Physical Education 2 (Karate)

- > Nonprofit/Social Enterprise Management
- > Public Policy and Service
- > Science, Society & Self

- > The Anthropology of Japan
- > The Art & Science of Decision Making in an Era of Accelerating Change: Transformation/Big Data/AI
- > Workshop: Archeolinguistics
- > Workshop: Fuji Culture



STUDENT LIFE



Clubs and Societies

YGU has a wide range of sports and arts-related student-led university clubs and societies that warmly welcome international students. In total, there are over 90 clubs and societies to choose from. You are also encouraged to start your own hobby circle and gather friends with similar interests!

Events

Many on-campus events are held throughout the academic year. Special highlights are iCLA's Winter and Summer Galas, and university-wide school festivals. During YGU's Jutoku Festival, the campus is enlivened with both student and Yamanashi locals-run stalls selling handmade merchandise and festival foods. Students are encouraged to take initiative in events, which are a great chance for them to showcase causes they are passionate about and grow their leadership skills, while also meaningfully engaging with the student community.

Accommodation

Exchange students typically stay in a private room at our on-campus iCLA student dormitory, sharing facilities such as showers and a common lounge. Living in our student dormitory means being a part of a true cross-cultural community where global friendships are born. Our accommodation is designed so you can find a balance between privacy and social life that best suits your own lifestyle. Some rooms even come with a view of Mount Fuji!

*Depending on availability exchange students may live in the iCLA student dormitory, other university housing, or off-campus apartments.

Campus Facilities

iCLA's campus was designed by Toyo Ito, one of the world's most celebrated architects and winner of the 2013 Pritzker Award. Our College is also recognized in the list of Selected Buildings/National Universities of Japan by the Ministry of Education, Culture, Sports, Science and Technology (MEXT) for its integrated, flexible and open design of learning and living spaces.

Students enrolled in our meal plan are served three hot meals on weekdays in our spacious cafeteria, which also has a cooking studio with multiple cooking units. In our Language Acquisition Center (LAC) there are various digital materials to assist with individual language learning, and students also have access to an extensive library of English and Japanese language books and multimedia materials.

The iCLA building also includes a student lounge, a martial arts dojo, a music studio, a traditional tatami room, and numerous study spaces for individual or group study. As a YGU student you also have access to all the student lounges, cafes and libraries on campus as well as free access to the fully equipped campus gym.

Part-time Work

International students on a student residence of status are able to apply for a special permission with the Immigration Services Agency of Japan allowing them to work part-time, up to 28 hours a week. There are opportunities off-campus if you are looking to work part-time while studying. A part-time job in Japan can help you gain a head start on working experience and understanding Japanese workplace culture.

Being an iCLA student means living and studying in a place like no other. With state-of-the-art facilities, on-campus accommodation, and a vibrant campus life with many clubs, societies and events, your time here should be exceptional!



LIFE IN KOFU, YAMANASHI

日本

山梨県

**YAMANASHI
PREFECTURE**



*iCLA is located in Kofu City,
the capital of Yamanashi
Prefecture, Japan.*

Conveniently located just a 90-minute train ride from the world's most populous metropolis, Tokyo, students here have their pick of entertainment, shopping and cuisine options in Japan's capital city on weekends, while studying in the serene and safe environment that is Yamanashi.

Whether it is delicious food, exciting activities, or unique events that interest you, there is something for everyone here. Merging the ancient and the modern, from its bustling metropolises to its serene natural spaces, the enduring allure of Japanese cuisine, arts and culture continues to delight and fascinate generations of visitors to our shores. Come and experience it all for yourself at iCLA.

HOW TO GET TO ICLA



GETTING HERE BY TRAIN

1 hr 30 min

3 min

Shinjuku

Kofu

Sakaori



iCLA is 5 minutes away from Sakaori on foot.



GETTING HERE BY BUS

2 hr 20 min

Haneda

iCLA

3 hr 30 min

Narita

iCLA



Whether it is delicious food, exciting activities, or unique events that interest you there is something for everyone in Japan!



THINGS TO SEE & DO



Mount Fuji & the Fuji Five Lakes

An enduring symbol, world heritage listed Mount Fuji holds sacred significance in Japan. Climbing Fuji and viewing the sunrise from its summit is on the bucket list of many of our international students. The Fuji Five Lakes region lies at the northern foot of mountain, and visitors there have a multitude of outdoor activities to choose from such as hiking, fishing, and even hang gliding.



Shosen-kyo

Shosen-kyo gorge in northern Kofu is designated as a National Special Scenic Site, and holds the title of most beautiful gorge in Japan in a ranking of domestic tourist destinations. Historically, shosen-kyo was a site for Japanese mountain worship, such as the practice of shugendo – a religion unique to Japan that emphasizes physical practice as the foundation of spiritual training. iCLA offers shugendo as a for-credit workshop.



Shingen-ko Matsuri

Yamanashi celebrates the legacy of Takeda Shingen, one of the strongest warlords in Japanese history, at the Shingen-ko Festival annually in mid-April. This festival is recognized as “the largest gathering of samurai in the world”. iCLA faculty and students participate every year – join them in marching through Kofu’s streets decked in samurai armor!



Seichi Junrei

Pop-culture fans can perform a Seichi Junrei, literally meaning making a pilgrimage to places featured in anime, manga and dramas. Travel to locations in the region that have been the setting for popular works like Yurukyan/Laid-back Camp and Yowamushi Pedal, and enjoy camping or cycling like the characters in the shows.



Winter Sports

Students at iCLA wake up every morning to a view of the Southern Alps surrounding Kofu city. For snowboarding and skiing enthusiasts, there are multiple ski resorts within an hour’s reach from campus, or internationally renowned ski resorts in the neighboring prefecture of Nagano. At Hakuba, race down slopes used by athletes in the 1998 Winter Olympics!



Onsen

The many onsen in Yamanashi is a testament to the prefecture’s healthy geothermal activity. One popular destination is Hottarakashi Onsen, located in the mountains north of Kofu. Bathers can soak in spectacular panoramic views of the Kofu basin down below with Mount Fuji in the distance, or gaze upon a ceiling of starry skies. We recommend coming before dawn for a sunrise-vista experience.



Fruit-picking

Long daylight hours and a basin topography have contributed to Yamanashi being one of the largest fruit-producing areas in Japan. The prefecture grows seasonal fruits such as peaches, plums, and cherries. Late summer and early autumn are when you can taste one of Yamanashi's specialties – the Shine Muscat grape. Visit one of the many grape farms here and pick your own bunch of Shine Muscat to savor.



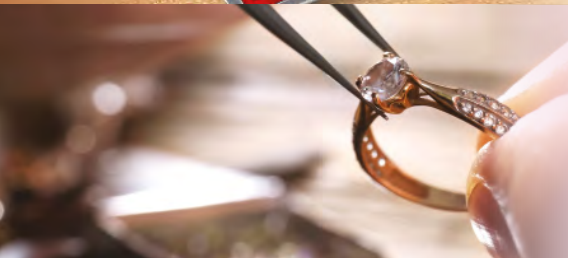
Wine-tasting

Yamanashi is the birthplace of Japanese winemaking and Japan's largest wine-growing region. The prefecture harvests the most grapes in the country, and more than 80 wineries throughout the prefecture produce approximately a third of all wine made in Japan. Enjoy locally crafted wine at winery tours and tasting sessions in wine country!



Hand-carved seals

The practice of using name seals for document verification is a long-held tradition in Japan. Koshu tebori insho are hand-engraved signature stamps made from raw material like Japanese boxwood and crystal, and the insho industry in Yamanashi is responsible for sixty percent of all seals produced in Japan. Why not customize a seal with your name carved in Japanese katakana alphabet as a valuable souvenir of your time here?



Jewelry

Another title Yamanashi holds is that of Japan's leading jewelry producer. Over centuries, abundant rock crystal mined from Mount Kinpu – one of Japan's 100 Famous Mountains – led to the prefecture developing a reputation for gemstone and precious metal processing. Visitors to the many workshops around Shosen-kyo can make their own piece of jewelry to take home.



Fuji-Q Highland

Fuji-Q Highland is arguably one of the most popular amusement parks in Japan. Famed for its variety of hair-raising and record-breaking rollercoasters, the park is a must-visit for any thrill-seeker. If corkscrew turns and vertical drops are not your cup of tea, Fuji-Q also offers more sedate attractions like a ferris wheel, character-themed areas and seasonal events like fireworks and an ice-skating rink.

iEXPERIENCE PROGRAM

*iCLA runs a unique **iExperience Program**, which offers a series of experiential learning opportunities outside of the classroom, enabling students to deepen their understanding of Yamanashi and Japan.*

See more on the next page >

iEXPERIENCE PROGRAM



iCLA strives to enrich your study abroad period by providing abundant opportunities to immerse yourself in local culture and society and make the most of your time in Yamanashi.

Organized closely with our faculty members, the iEXperience Program is designed to offer an interdisciplinary learning experience and provide a comprehensive program of discovery, study and enjoyment outside of class hours.

A series of engaging programs are organized each semester, inviting you to explore Yamanashi Prefecture's significant landmarks, heritage, arts and crafts through interactive field trips and master-classes. Enjoy a tour in one of the country's oldest standing wineries, a visit to historical temples, and a lively Wadaiko jam sessions with local high school students. New discoveries await you in the upcoming semesters at iCLA, offering limitless possibilities for cultural exploration and personal growth!

Koshu Wine Program

"I enjoyed all parts of it. The chronology in which things were organised was perfect to be able to learn about the land in the lecture, then visit the place and get a tour and then be able to taste the wine we spoke about. I loved the hot wine that was being sold outside in the cold apart from the wonderful tour given to us by the guide." - *Student testimonial*



Wadaiko Program

"I never quite realised how intricate a wadaiko performance could be. I've always loved the drums and it was incredible to see the Japanese version of the instrument. It's amazing how music can be both so similar and so different in different cultures. The performance of the students was immaculate! Absolutely incredible." - *Student testimonial*



Temple Program

iCLA's Japan Studies Professor William Reed is one of the instructors of the iEXperience program. Expert in samurai culture, writer, professional calligrapher, master of Aikido, laido, Professor Reed will be a guide on your journey to understanding Japanese culture.

Shakyo (sutra-copying) at Erinji Temple with Professor Reed



EXCHANGE PROGRAM DETAILS

Academic Calendar

Exchange students can choose to study at iCLA for one or two semester(s).

Spring Semester:	April 1-early August
Fall Semester:	September 1-end of December

Orientation will be provided for a week before the start of each semester.

Eligibility

- Your home institution has a student exchange partnership with iCLA.
- You have completed at least one academic year at your home institution by the time of entry to iCLA.
- You have a cumulative GPA of at least 2.5 on a 4.0 scale or equivalent.
- You have a TOEFL score of 80 (iBT), 550 (iTP), Cambridge FCE, IELTS 6.0 or equivalent.*

* The above English requirement is exempt for students of certain partner institutions/programs.

Application Procedure

- Have your international office/exchange coordinator nominate you to iCLA
- Once your nomination is accepted, apply through the HEApply online portal (an activation link will be sent to your e-mail address)

Spring intake deadline:	October 15
Fall intake deadline:	April 15

Required Items for Application

- An online account and a nomination from your home university
- Personal Statement
- iCLA courses you intend to register for
- Full name and contact details of one referee
- Copy of biodata page of your passport that is valid for at least one year from your intended entry to iCLA
- Copy of a certificate of English language proficiency (if applicable)
- Copy of the official academic transcript in English issued by home institution

Approximate Fee

One semester (4 months)	JPY 422,710-471,710
Two semesters from Spring (9 months):	JPY 814,590-863,590
Two semesters from Fall (11 months):	JPY 955,770-1,004,770

Fees vary depending on accommodation type. The above is based on iCLA's student dormitory, and includes room and board (3 meals/day on weekdays), utilities, cleaning and re-painting, optional rental items (bedding set, mini-fridge, bicycle, etc.) and student insurance.

Want to know more?



Head to our Study Abroad Inbound page for further details.

www.icla.ygu.ac.jp/en/inbound/



CONNECT WITH US

 **iCLA** (*International College of Liberal Arts*)

 **icla.ygu**

 **icla_ygu**

 **iclaJapan**

***International College
of Liberal Arts (iCLA)
Yamanashi Gakuin University***

Address: 2-4-5 Sakaori, Kofu,
Yamanashi 400-8575 Japan

TEL: +81-55-224-1350

Inquiries: icla.inbound@c2c.ac.jp

www.icla.ygu.ac.jp

*The information in this brochure is accurate as of February 2024.

